

A group of people, including adults and children, are participating in a water festival. A man in an orange shirt is pouring water from a large yellow bucket over a child's head. Other people are holding towels and water balloons. The scene is outdoors with trees in the background.

CAMP SAY: AU JAN 9-15TH 2027



A MESSAGE FROM RICH!

Hello Camper Families! As we look forward to Camp SAY: AU 2027, our 5th year of camp, it is also a time to pause and reflect on where this journey began.

Camp SAY: AU, modeled after Camp SAY in the US, was built to be a place of belonging and connection for young people who stutter to have a space where everyone has as much time as they need to speak.

Over the last 4 years, camp has grown from originally welcoming 12 campers in 2023, to 30 campers in 2026. Camp has become an established part of SAY: AU, and our original vision remains the heart of our camp community.

Camp SAY: AU is located at Log Cabin Camp, a beautiful and spectacular camp location, with an abundant of exciting activities, and with a truly WOW factor!

Camp SAY: AU 2027 will run over 7 days and 6 nights, starting on Saturday January 9th to Friday January 15th.

Much love, Rich (Camp Director).

CAMP SAY: AU 2027 WILL BE HOSTED AT :

Log Cabin Camp in
Creswick, VIC January
9th-15th, 2027





ABOUT LOG CABIN CAMP



Log Cabin Camp (LCC) is a family-owned camp run by the truly amazing partner duo, Christine & Grant.

LCC is one of the premiere campsite facilities in Victoria, located on the outskirts of the historical former gold mining town of Creswick.

LCC is located 15 minutes from Ballarat and 140km West of Melbourne's CBD.

LCC is also an accredited Australian Camping Association Campsite.

The 36-acre impeccably maintained facility is adjacent to beautiful forests and pine plantations, offering a lovely and welcoming setting which immediately inspires a sense of community...which aligns deeply with a core value of Camp SAY: AU.

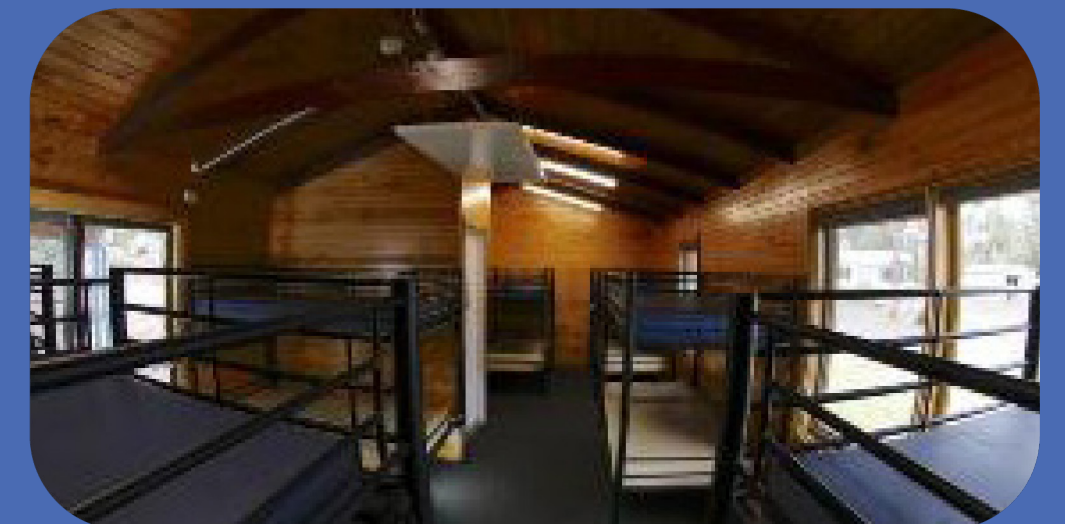
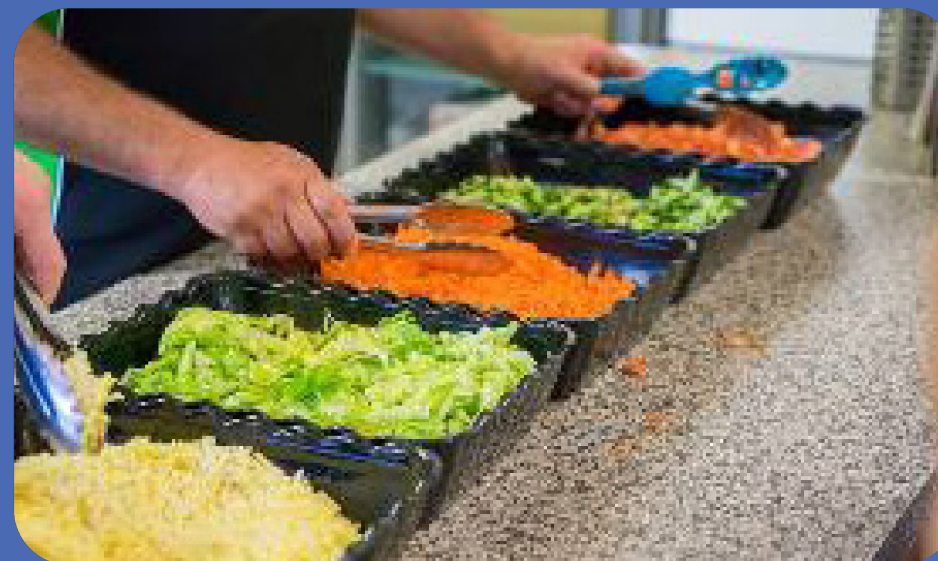
2027 will be our fifth year at LCC, and we can not wait to be back!

The dining room is a perfect space for the entire camp to start our day and to share a delicious and nutritious meal together. Log Cabin Camp will be able to accommodate all dietary restrictions, so we have your child covered!

All camper cabins are newly-renovated and comfortable, complete with modern bathrooms and A/C.

The campsite also has spacious indoor/outdoor activity areas - REC centre, a tented picnic area, and a picturesque spring-fed lake.

STUNNING FACILITIES



MORE & MORE ACTIVITIES



LCC has an extensive array of amazing and traditional outdoor/indoor camp activities to keep our campers and staff entertained for hours on end. These include canoeing, dual zip-lining, leap of faith, giant swing, archery, night walks, Billy Tea & Damper, and much more.

Alongside LCC activities, we also provide campers with our own programming activities aimed at helping to support our camper's confidence and personal growth.

All of which provide challenges that will allow and encourage our campers to safely expand their comfort zones, and to have lots and lots of fun with other children who stutter.



Led by Camp Directors Rich, Georgie, and Stephen, our incredibly kind & passionate team are truly dedicated to providing an accepting, stuttering-safe, inclusive, empathic, loving, supportive, and deep listening camp environment in which all of our campers will have as much time as they need to say the words they want to say, and where they will know that it is really ok to stutter.

Each and every camper will always be seen and heard by every member of our team, many of whom stutter, and all are super stuttering allies. And, our team loves to have fun!

OUR CAMP TEAM





Camp SAY: AU is a positive, supportive, encouraging environment where young people who stutter can come together as a community and build self-confidence.....and all while having lots and lots of fun!

Our entire Camp SAY: AU team is eagerly looking forward to another epic and magical year of unforgettable experiences and lifelong memories at Log Cabin Camp.

At Camp SAY: AU, we are 100% committed to helping each camper discover their inner strength, build confidence, and embrace independence—all while forging deep friendships that last far beyond the summer.

Camp SAY: AU is more than just a place; it's a family that lifts each other up and creates bonds that endure for a lifetime. We are proud to continue this journey of growth, joy, and connection with our amazing campers. Our summers would not be the same without camp and our campers...so, roll on 2027!

[ENOLMENT IS NOW OPEN - CLICK HERE & ENROL YOUR CHILD TODAY!](#)

Please reach out to Camp SAY: AU Director Rich Stephens with any questions: rich@sayaustralia.org.au / 0401 723 461.

CAMP SAY:AU

A Summer Camp For Young People Who Stutter

